

220 SEAT TOURIST CLASS

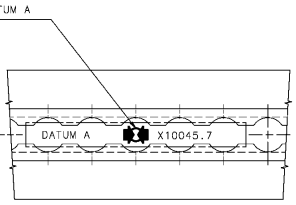
- 15 VORHANDENE SITZE AUSBAUEN  
REMOVE EXISTING SEATS
- 14 ANBRINGUNGSORT FUER BABYTRAGETASCHE  
ATTACHMENT PLACE FOR BABYBAGGNET
- 13 KLAPPBARE ARMLEHNE GANGSEITIG  
FOLDABLE ARMREST AISLE SIDE
- 12 NUR RH SEITE  
ONLY RH SIDE
- 11 BEHINDERUNG ARMLEHNE  
HANDICAP ARMREST
- 10 FARBE : LICHTGRAU  
COLOUR: LIGHT GREY
- 9 FARBE : DUNKELBLAU  
COLOUR: DARK BLUE
- 8 OHNE TISCH  
NO BACKTABLE
- 7 KENNZEICHEN DES HINTEREN FITTINGS MIT SCHWARZER FARBE  
NACH DEM EINBAU GEMAESS AMM  
MARK THE AFT FITTING WITH BLACK COLOR AFTER ASSEMBLY  
ACCORDING TO AMM
- 6 NUR KONTROLLMASSE  
CONTROL DIMENSIONS ONLY
- 5 DREHMOMENT FUER HINTERE SITZBEFESTIGUNG: 9±1 Nm  
REAR FITTING TO BE TORQUED TO 80±9 in-Lbs
- 4 FUER DIE VORDERE SITZBEFESTIGUNG GILT: 2 Nm DANN EINE 1/4 UMDREHUNG  
THE ANTI-RATTLE NUT TO BE TORQUED TO 18 in-Lbs PLUS 1/4 TURN
- 3 MITTE VORDERER STUDB  
MESSPUNKT DER PASSAGIERSITZE  
CENTER OF FRONT STUD =  
TO BE DEFINED AS MEASURE POINT  
OF PASSENGER SEATS
- 2 ABSTAND ZWISCHEN VORDEREM UND AEUSSERST HINTEREM BEFESTIGUNGSPUNKT  
DISTANCE BETWEEN FRONT AND MOST REAR STUD
- 1 TISCH IN ARMLEHNE  
TABLE IN ARMREST

038-15

FOR INTERNAL USE ONLY  
 DEVELOPED FROM:  
 D252-86013-036



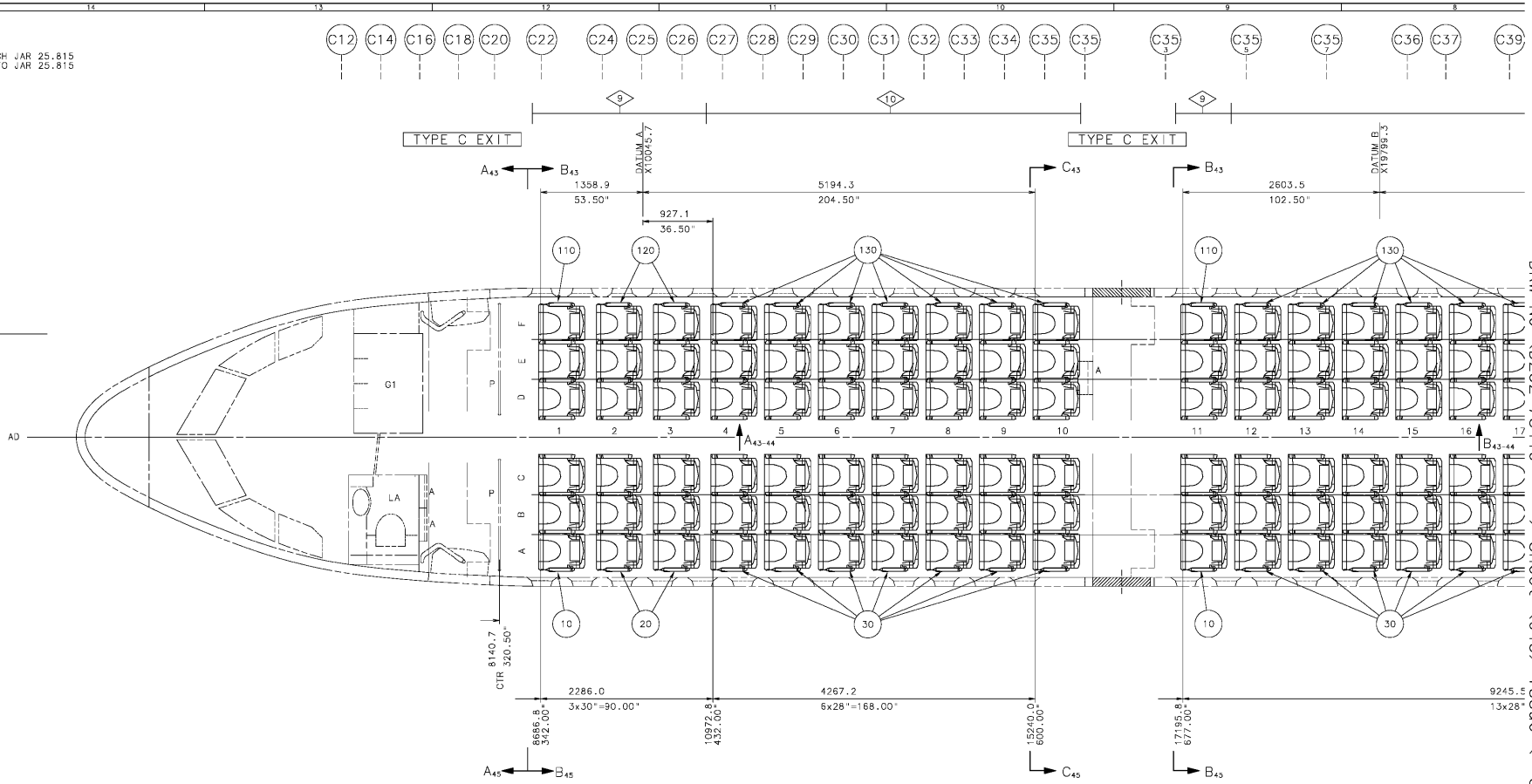
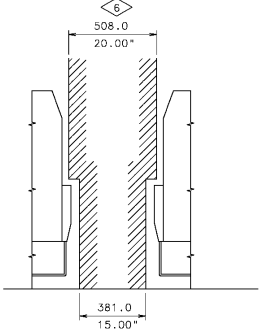
DATUM INFORMATION



This drawing is the property of Airbus Operations GmbH which reserves all rights

ETIMTS NOT STATED	SURFACE FINISH	✓	WICKROD	✓	Airbus Operations GmbH
ADD 0001 (DAN1304)					
ADD 0002 (DAN388)					
ADD 0003 (DAN388)					
SCALE: VALID FOR ONLY 1:20	SCALE: VALID FOR ONLY 1:10				
FILE: AIRBUS	PRODUCTION: 10 D252 78419				
RD SITZEINBAU	CAD-DWG				
RD SEAT LAYOUT	SHEET: 43				

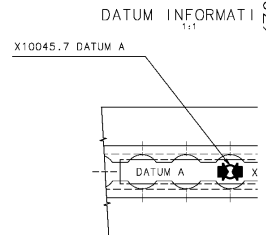
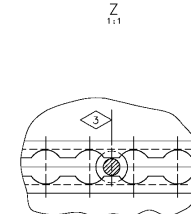
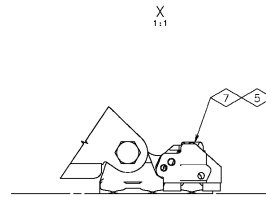
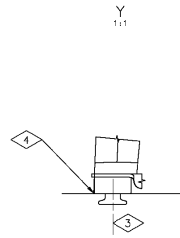
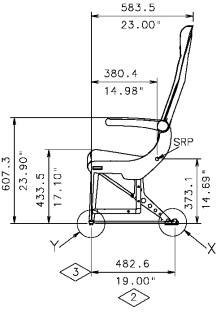
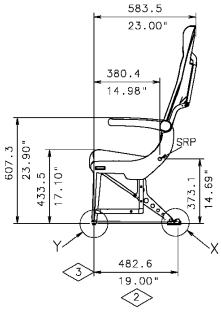
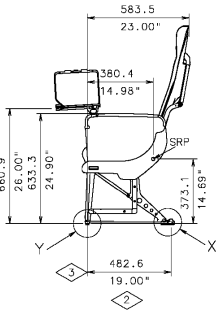
ABMESSUNGEN DER LAENGGANGBREITTE NACH JAR 25.815  
 DIMENSION OF AISLE WIDTH ACCORDING TO JAR 25.815



RECARO - SEAT  
 FIRST ROW WITH IAT 1:110

RECARO - SEAT  
 STANDARD 6:13

RECARO - SEAT  
 LAST ROW 6:13



BATCHPLOT, 20.12.2018 09:36:30, D252-78419/043/S, / Without Revision Service - uncontrolled copy  
 DRW No <D252-78419 / Sheet <043 / Issue < S / Frame <02 / <02>