

THIRD ANGLE PROJECTION DO NOT SCALE ALL DIMENSIONS IN INCHES UNLESS OTHERWISE STATED

NOTES: UNLESS OTHERWISE SPECIFIED

1. AISLE WIDTHS MUST MEET THE REQUIREMENTS SET FORTH IN JAR 25.815.
2. EMERGENCY EXITS MUST BE ACCESSIBLE PER JAR 25.813 UNLESS DEVIATION GRANTED.
3. "FASTEN SEAT BELT" AND "NO SMOKING" SIGNS MUST BE VISIBLE WHEN ILLUMINATED TO EACH PERSON SEATED IN THE PASSENGER CABIN.
4. ALL SEATS MUST BE FIRE BLOCKED IN ACCORDANCE WITH JAR 25.853 (b) OR EQUIVALENT.
5. ALL PASSENGER AND CREW SEAT BELTS MUST CONFORM TO ETSO-C22g OR EQUIVALENT.
6. ALL SEAT BACKS AND BULKHEADS MUST BE MARKED WITH "FASTEN SEAT BELT WHILE SEATED" PLACARDS.
7. ARMREST IN UPRIGHT POSITION MUST NOT PROJECT BEYOND SEAT BACK IN UPRIGHT POSITION MORE THAN .5", TYPICAL FOR ALL SEATS.
8. PASSAGEWAY TO ALL TYPE I AND TYPE II EXITS MUST NOT BE LESS THAN 20".
9. AIRCRAFT WEIGHT AND BALANCE MUST BE RECALCULATED OR AIRCRAFT WEIGHED AFTER INTERIOR MODIFICATION TO DETERMINE NEW AIRCRAFT WEIGHT AND CG LOCATION. REVISION TO THE AIRCRAFT WEIGHT AND BALANCE RECORD MUST BE MADE TO REFLECT CHANGES.
10. ALL SEAT LOCATING DIMENSIONS ARE CENTERED ON THE SEATS FRONT MOUNTING STUD.
11. SEAT ENVELOPE DATA DEFINED PER ECONOMY CLASS SEAT WEBER 25-26-40 MARCH 18TH 2003.

FWD LH & RH WINDSCREENS (ITEMS 24 & 25) ARE INSTALLED IAW AMES EB A320 WINDSCREEN INSTALLATION EB_M11600108_RSP_17042012.

REMOVAL INSTRUCTIONS:

1. REMOVE AND TAG AS SERVICEABLE FWD LEFT HAND & RIGHT HAND CLOSETS IAW AMM 25-27-44.
2. REMOVE ALL PASSENGER LIFE VESTS FROM EACH PAX LIFE VEST POUCH AND RETAIN FOR REINSTALLATION.
3. REMOVE AND TAG AS SERVICEABLE ALL SEATING ASSEMBLIES IAW AMM 25-21-41, RETAIN ALL SEAT TRACKING CAPPING FOR REINSTALLATION (REFER TO ERT/166-201).

INSTALLATION INSTRUCTIONS:

1. INSTALL NEW PASSENGER SEATING ASSEMBLIES IAW AMM 25-21-41, WITH REFERENCE TO ERT/166-201.
2. INSTALL 1 PASSENGER LIFE VEST PER PAX IN PROVISIONED LOCATIONS ON EACH SEATING ASSEMBLY.
3. INSTALL SEAT TRACK CAPPING AS REQUIRED, WITH REFERENCE TO IPC 25-28-09 & ERT/166-201.
4. CENTRE BLANKING PLATE ON THE ARMREST OF EACH PASSENGER SEAT TO BLANK PCU HOLE.
5. BACK DRILL HOLES IN SEAT ARM REST AS REQUIRED.
6. INSTALL BLANKING PLATE USING SUITABLE 1/8" POP RIVETS (ITEM 26).
7. PAINT RIVETS USING P/N ULN00669 GREY PAINT OR EQUIVALENT

CLOSE UP:

1. PERFORM LOOSE EQUIPMENT CHECK AND RETURN THE AIRCRAFT TO A SERVICEABLE CONDITION.

REVISIONS		
ISSUE	DESCRIPTION	DATE
1	INITIAL ISSUE	17/05/2012
2	REMOVED NOTES ITEM 5 THRU 17 INCLUDED SHEET 3 FOR BLANKING PLATE INSTALLATION UPDATED INCLUDED INSTALLATION INSTRUCTIONS 4, 5, 6 & 7 FOR BLANKING PLATES, INCLUDED ITEM 26	25/05/2012

QTY	Item No	Part Number	Description	Note
	A/R	26	TLED416BS	1/8" INCH RIVET
	1	25	W32C00-02-01116	AMES FWD RH WINDSCREEN
	1	24	W32C00-01-1116	AMES FWD LH WINDSCREEN
	180	23	ERT/166-512-08	BLANKING PLATE
	AR	21	REFER TO IPC	SEAT TRACK CAPPING
	180	19	P01074-101W	PASSENGER LIFE VESTS
	1	17	119225-016	SEAT AY-MODEL AI 1000I-CAA, T/C STD TPL, NO TABLES, 3" RECL, NO BREAKOVER - IFE
	1	16	119225-013	SEAT AY-MODEL AI 1000I-CAA, T/C STD TPL, W/EPL, NO TABLES, 3" RECL, NO BREAKOVER - IFE
	1	15	119225-012	SEAT AY-MODEL AI 1000I-CAA, T/C STD TPL, W/EPL, NO OUTBD ARM, SPCL OUTBD CUSHION, NO BREAKOVER - IFE
	1	14	119225-011	SEAT AY-MODEL AI 1000I-CAA, T/C STD TPL, W/EPL, NO OUTBD ARM, SPCL OUTBD CUSHION, NO BREAKOVER - IFE
	1	13	119225-010	SEAT AY-MODEL AI 1000I-CAA, T/C STD TPL, DIRECTIONAL LATCH W/ AFT SLIDER, NO RECL, NO OUTBD ARM, SPCL OUTBD CUSHION, NO BREAKOVER - IFE
	1	12	119225-009	SEAT AY-MODEL AI 1000I-CAA, T/C STD TPL, DIRECTIONAL LATCH W/ AFT SLIDER, NO RECL, NO OUTBD ARM, SPCL OUTBD CUSHION, NO BREAKOVER - IFE
	1	11	119225-008	SEAT AY-MODEL AI 1000I-CAA, T/C STD TPL, W/EPL, DIRECTIONAL LATCH W/ AFT SLIDER, NO RECL, NO BREAKOVER - IFE
	1	10	119225-007	SEAT AY-MODEL AI 1000I-CAA, T/C STD TPL, W/EPL, DIRECTIONAL LATCH W/ AFT SLIDER, NO RECL, NO BREAKOVER - IFE
	9	9	119225-003	SEAT AY-MODEL AI 1000I-CAA, T/C STD TPL, WITH EPL, NO BREAKOVER - IFE
	25	8	119225-006	SEAT AY-MODEL AI 1000I-CAA, T/C STD TPL, NO BREAKOVER - IFE
	16	7	119225-001	SEAT AY-MODEL AI 1000I-CAA, T/C STD TPL, NO BREAKOVER - IFE
	1	6	119224-004	SEAT AY-MODEL AI1000I-CAA, T/C IAT TPL, NO BREAKOVER - IFE
	1	5	119224-001	SEAT AY-MODEL AI1000I-CAA, T/C IAT TPL, WITH EPL, NO BREAKOVER - IFE
	4			
	3			
	2			
		1	ERT/166-201-01	SEAT INSTALLATION - MSN 1938 LIVINGSTON

2	1	Issue	Released	
	BOD	Drawn	Checked	
	MM	Electrical & Avionics	Checked	
	MM	Cabin Safety	Checked	
	KMcK	Structures	Checked	
	KMcK	Office of Airworthiness	Checked	

SEAT INSTALLATION

Aircraft Type: A320 For assembly on: Scale: N/A

DRG No. ERT/ 166-201

1 of 3

A
DRG No ERT/ 166-201

B

C

D

E

F

TITLE: ERT/166-201 ISSUE: 2

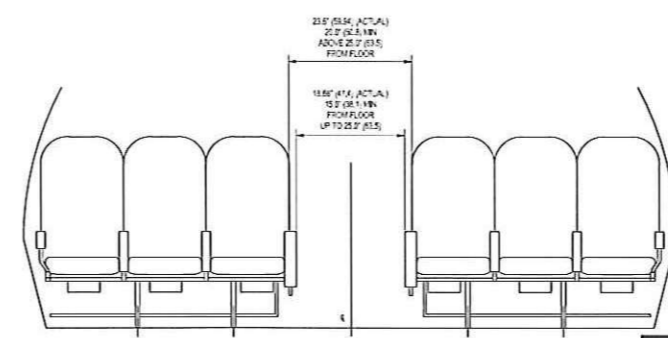
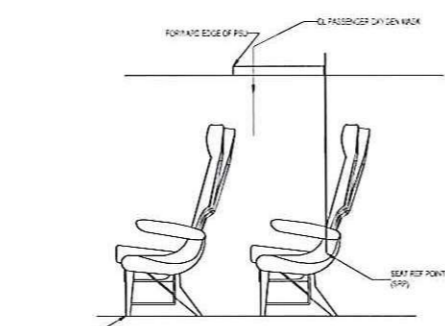
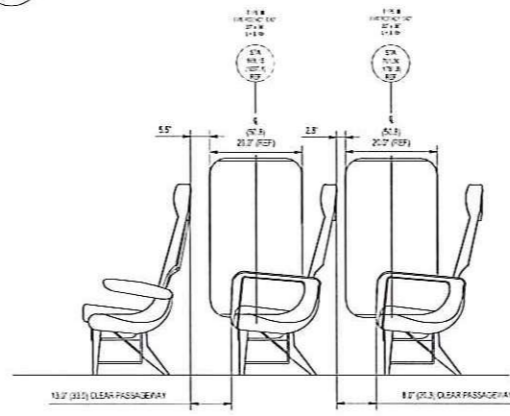
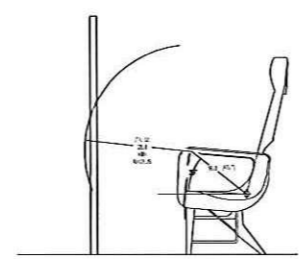
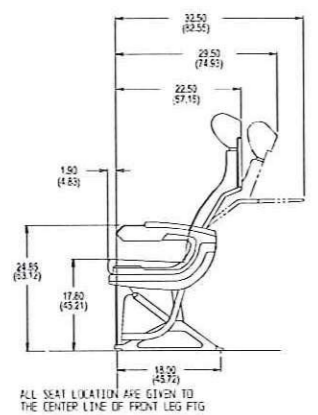
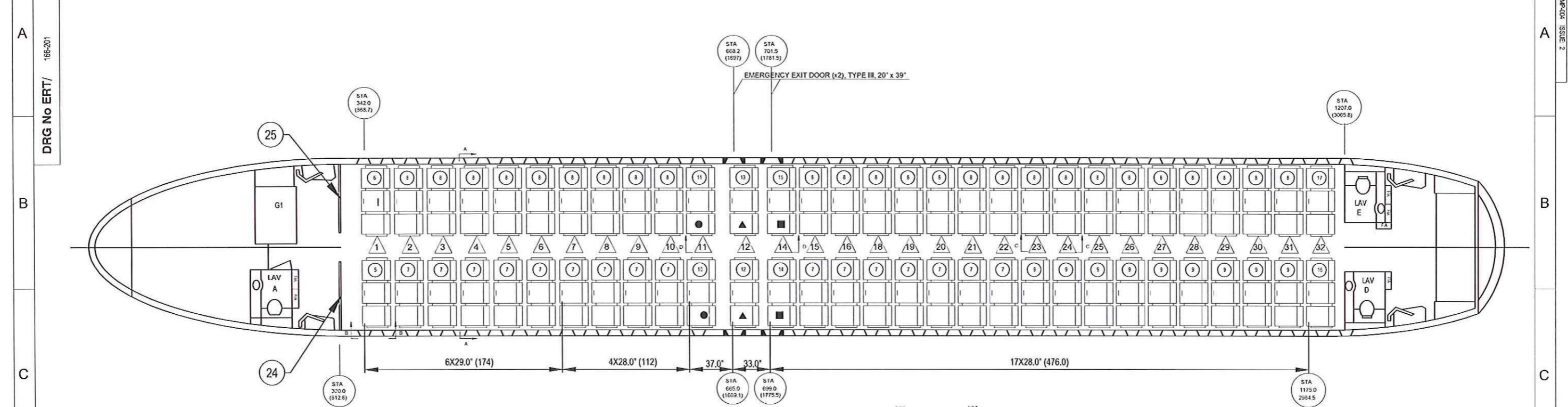
B

C

D

E

F



LEGEND	
●	= NO RECLINE
▲	= NO RECLINE, NO BREAKOVER
■	= NO BREAKOVER
△	= SEAT ROW NUMBER
(XXX.X)	= DIMENSION IN CENTIMETRES
F/A	= FLIGHT ATTENDANT SEAT

2	1	Issue
BOD	MM	Drawn
MM	MM	Checked
MM	MM	Electrical & Avionics
KMcK	MM	Cabin Safety
KMcK	MM	Structures
KMcK	MM	Offing of Aircraft

Title: SEAT INSTALLATION	
Arch Type: A320	First Issued on: -
Scale: N/A	DRG No. ERT/ 166-201
Sheet: 2	of 3

THIRD ANGLE PROJECTION ^ 4^ DO NOT SCALE ALL DIMENSIONS IN INCHES UNLESS OTHERWISE STATED

H
PC
O
PC

4 PLACES

B

CENTRE BLANKING PLATE ON PCU LOCATION

D

PCU BLANKING PLATE INSTALLATION
INSTALLATION SIMILAR FOR EACH ARMREST ON EACH TRIPLE SEAT
ASSEMBLY

2 1 has
BOD D m
MM
MM Etirt-J-1
KMCK (** SIV) b
KMCK ir
KMCK Ottat' el ferity
?..V.:rt-r..ll:

; α A...:rt...:E EiltechAvbionScivicc,
SEAT INSTALLATION
Set' V* DRG No. ERT/ 166-201 * J